

# Honeybuckets: A Long Way From the Museum



Brian Berube  
YKHC Office of Environmental Health





- In 1995 we promised to “put the honey bucket in the museum.”
- State of Alaska - 22% of occupied homes in rural Alaska lack indoor plumbing.
- Different reality in the YK Delta.



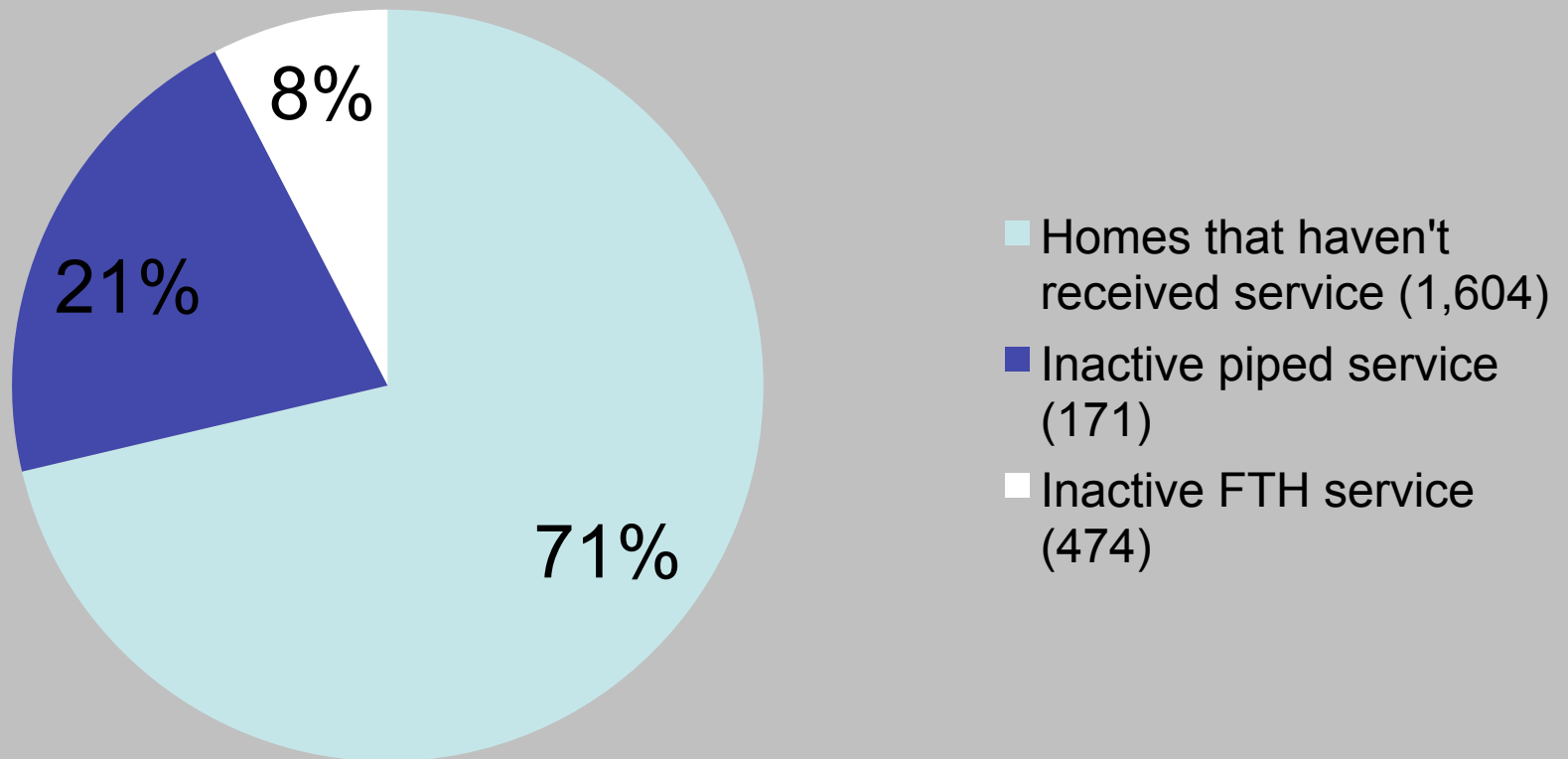
# 2014 YKHC OEHE Service Count

- 4,910 total homes, 48 villages
- In March of 2014, 2,249 were not receiving water/sewer service – 45%



# Homes Without Service

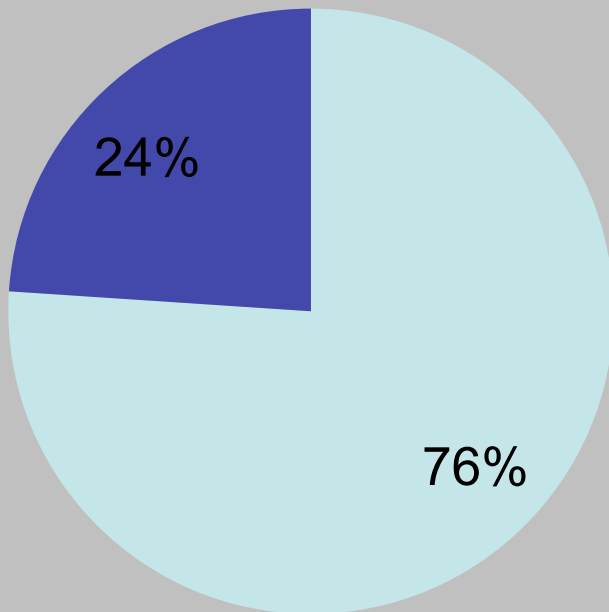
## March 2014





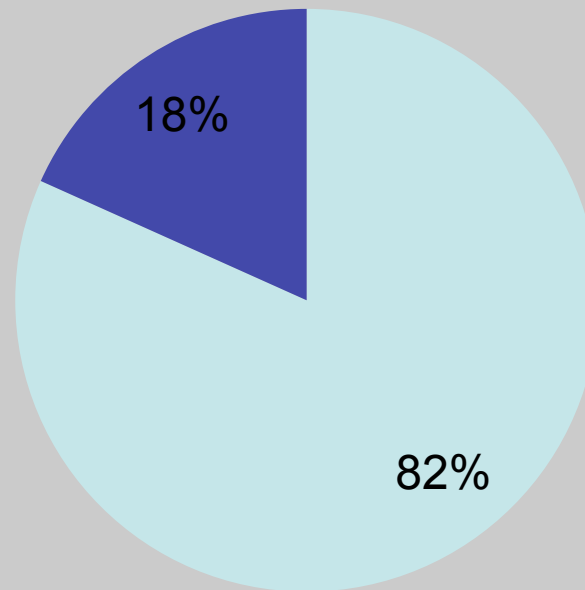
# Homes With Service

## FTH Systems



- Homes receiving FTH service (543)
- Inactive FTH homes (171)

## Piped Systems



- Homes receiving piped service (2,118)
- Inactive piped service (474)















# A Long Ways From the Museum

- Honeybuckets are not “going to the museum” any time soon.
- Disparity between available funding and estimated need to address critical health need is \$667.2 million dollars and growing.
- Far less money coming into the system.
- Projects are exceedingly expensive.





# Equipment Costs

## Arctic Insulation

- Haul trailer  
» **\$7,100**
- Honeybucket hopper
- **\$1,925**
- Hopper cover
- **\$750**
- Hopper frame
- **\$1,250**
- **TOTAL \$3,925**

## Bob's Services

- Haul trailer  
» **\$6,886**
- Honeybucket hopper
- **\$2,145**
- Hopper cover
- **\$791**
- Hopper frame
- **\$362**
- **TOTAL \$3,298**



# Solutions





# Reinventing the Honeybucket



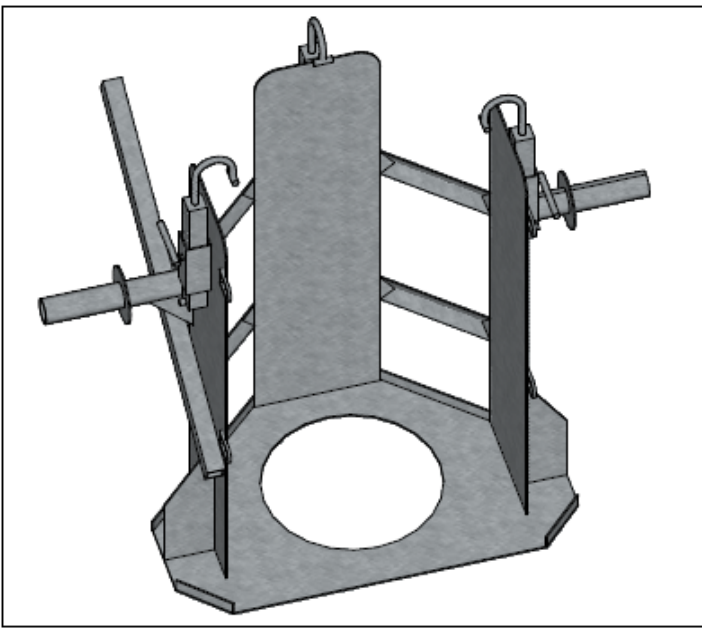
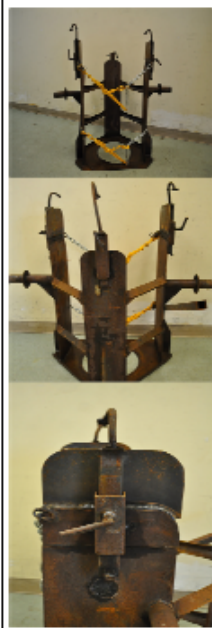




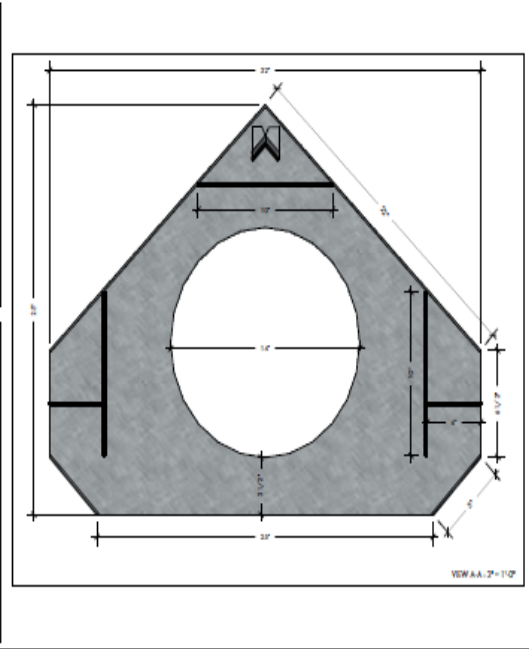
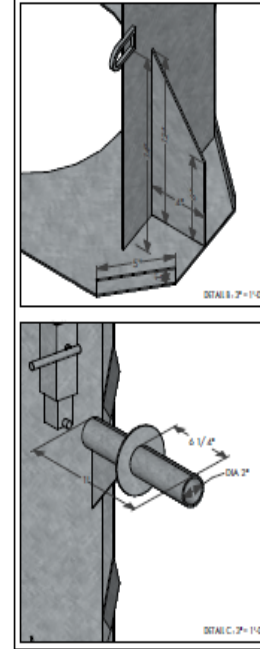






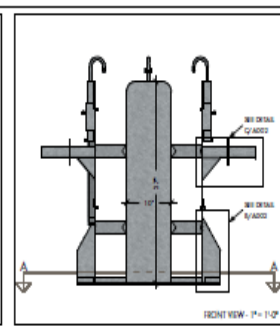
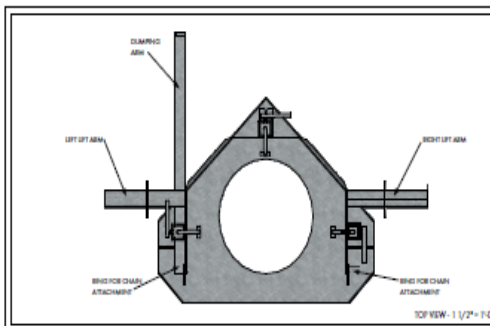


YRHC - MULTI-CANT BARRIER

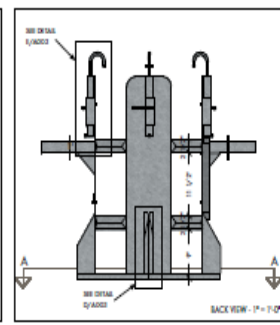
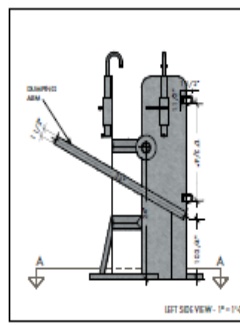
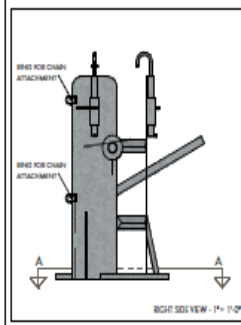


PLANS AND DETAILS

A 002

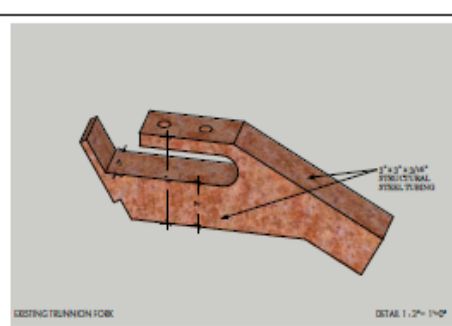
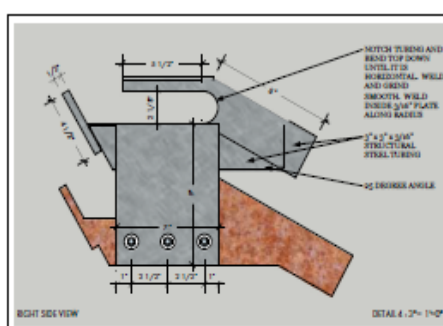


YRHC - MULTI-CANT BARRIER



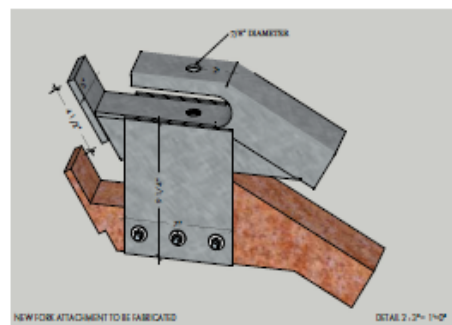
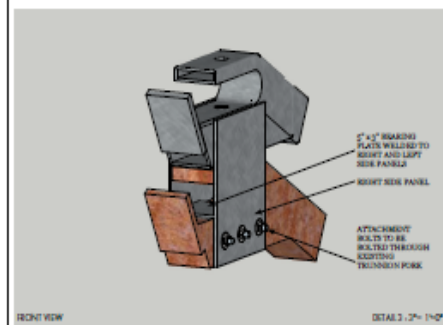
PLANS AND ELEVATIONS

A 001



YRHC - MULTI-CANT BARRIER

A 002



YRHC - MULTI-CANT BARRIER

A 004



# Simple Solutions



# Honeybuckets and Lagoons

